

DocuArmor Messenger

Secure On-line Communications

Portable Security



Compact enough to fit on a **USB drive** and carry in your pocket. DocuArmor Messenger allows the user to exchange encrypted messages by plugging in to any PC. It also runs on laptops, desktops, or any server.

For a very low cost prevent unwanted eyes and ears from eavesdropping on your on-line conversations.

[Learn more...](#)

Highest Encryption and Performance

DocuArmor Messenger uses secure socket layer technology that provides a direct connection between you and your callers. This eliminates the security exposure of message copies being intercepted, stored, or retrieved from message servers.

Even if a message is intercepted via “sniffers” or other unauthorized monitoring techniques, the message encryption ensures your privacy.

DocuArmor Messenger uses AES 256-bit encryption to protect your confidential information, the highest encryption standard allowable in the United States.

Calling Cards

Calling Cards are the physical file which provides identification between callers. It includes security certificates used to validate callers and encrypt exchanged messages. The user also has the ability to set caller nicknames, assign user photos, save connection information, and set user preferences in calling cards.

Adding Pictures



Associating a face or image with a calling card is easy. Just crop a jpg or gif to a wallet size photo and assign it to a calling card. DocuArmor Messenger will copy and display the image along with the calling card information. [Learn](#)

[more...](#)

Calling Card Exchange

The ability to easily exchange calling cards among co-workers, family and friends allows you to keep in touch with those you choose. With DocuArmor Messenger you control which callers are allowed to connect by importing or downloading their cards.

The information you exchange is decipherable only by the intended recipient.

Password Protection

Access to DocuArmor Messenger is password protected. A lock up feature is provided allowing the user to secure the application at any time and disconnect if an incorrect password is entered repeatedly.

Messages are electronically encrypted and the keys used in ciphering are password protected.

Easy for ALL User Levels

The highest security with the easiest interface, select whom you're calling and hit the connect button. It's that simple.

You no longer need to worry that your on-line conversations are being monitored or intercepted by unwanted or illegal listeners. [Learn more...](#)

Invisible Mode

DocuArmor Messenger will lock and hide immediately without disconnecting via Alt + I. The password is required to re-access the application.

Certificate Generation

DocuArmor Messenger will prompt you to go through the steps to build a certificate and encryption keys used with the Secure Socket Layer technology. An owner calling card will be generated during initialization.

Prevention and Safeguards

- DocuArmor Messenger keeps messages protected during transmission by using Secure Socket Layer (SSL) technology.
- No one except the intended receiver can read your encrypted messages. Send messages directly without exposing any copies to servers.
- Strengthen your security and protect your information from eavesdroppers and identity thieves.
- Easy lookup and update of cable/DSL address changes for yourself and others you regularly call.

Personal Advantage

DocuArmor Messenger allows individuals to assure that any private information shared in conversations remains confidential.

DocuArmor Messenger provides the granularity of encrypting any messages that you'd like to keep private.

Competition and Pricing

DocuArmor Messenger is competitively and economically priced.

There are few if any competitors for this product, no one offers this much rich function for an economical price. Most competitors offer pricey, difficult solutions; the exposure of server stored messages; annual subscriptions for secure features; and expensive maintenance fees.

Contact

Logical Answers Inc. also offers custom programming and support services to tailor products to your needs.

A single user license sells for only \$10. For further information about this suite of products or for volume pricing please contact:



support@logicalanswers.com

Logical Answers Inc.

Troy, MI 48085

(248) 528-1742

web: www.logicalanswers.com

DocuArmor Messenger Overview

Ar·mor (är'mär) **n.** 1. Any covering used as a defense against weapons, 4. any protective covering, 5. to cover or equip with armor or armor plate.



DocuArmor Messenger is a secure software application that provides secure instant messaging between users. A **Secure Socket Layer (SSL)** session is initiated between two users on their respective computers. Once they are connected, all information exchanged is encrypted during transit to prevent any eavesdropper from reading any messages they might intercept. DocuArmor Messenger will encrypt and decrypt

the text messages dynamically and is available as a standalone application or add-on to DocuArmor individual and professional edition..

In today's environment, information security is crucial for everyone. Security needs vary widely from protecting social security numbers to guarding intellectual property.

DocuArmor Messenger ...

1. Allows individual users to control who is allowed to make contact thus preventing unsolicited persons from joining their network or initiating conversations without prior approval.
2. Eliminates copies of sensitive information left on message servers that can be exposed to strangers.
3. Prevents eavesdroppers from peddling intercepted confidential communications.
4. Guarantees its users their right to privacy which can be compromised in today's environment which is permeated by electronic surveyors.

The terms encryption/encipher (cipher) and decryption/decipher interchangeably.

How Does It Work?

DocuArmor Messenger allows users to communicate securely over an SSL TCP/IP connection. After starting the DocuArmor Messenger application, a user can initiate a connection to any other person that has exchanged their Certificate Calling Cards (file: CCard.alias.swp) and their static/dynamic TCP/IP address.

DocuArmor Messenger generates for each user a file called a Certificate Calling Card. The card contains information which allows other users to connect and communicate with the owner. Once the card is exchanged and accepted conversations can be started by simply choosing whom to call and pressing the connect button. See the section in this document on Certificate Calling Cards for additional details.

In the following example, Lisa initiates a connection to Jim. If Jim's machine is running and listening for callers, it will authenticate Lisa's credentials and vice versa. If the authentication succeeds, a connection will be established and they can begin sending text messages to each other in parallel. The messages will be protected using symmetric encryption and deciphered after arriving at their destination.



Figure 1. DocuArmor Messenger session

Either Lisa or Jim can terminate the session by depressing the **hang up** button.

DocuArmor Messenger is different than *instant messaging* schemes which involve a shared server. Instant messaging users send their text messages to a shared central server which records the information and distributes a copy to each receiver. A user risks their privacy and confidentiality if their instant messaging vendor does not offer encryption and SSL protection. DocuArmor Messenger considers security its highest priority and provides the type of confidentiality people desire. It also allows connections in various locations as long as each user exchanges their TCP/IP address by using the provided online directory service or email.

Associating a Photo To Calling Card

Photo images can be integrated with each *existing* calling card. Ideally, the image should be 90x110 pixels and in **gif** or **jpg** format. If the image is larger or smaller than the 90x110, it will be resized within the image frame but might appear distorted if the original ratio is not proportional to 90x110.

After a calling card is saved, the initial image is a blank head with a question mark in the center. The **Assign Photo** button is enabled allowing the selection of an existing image to be associated to the contact record.

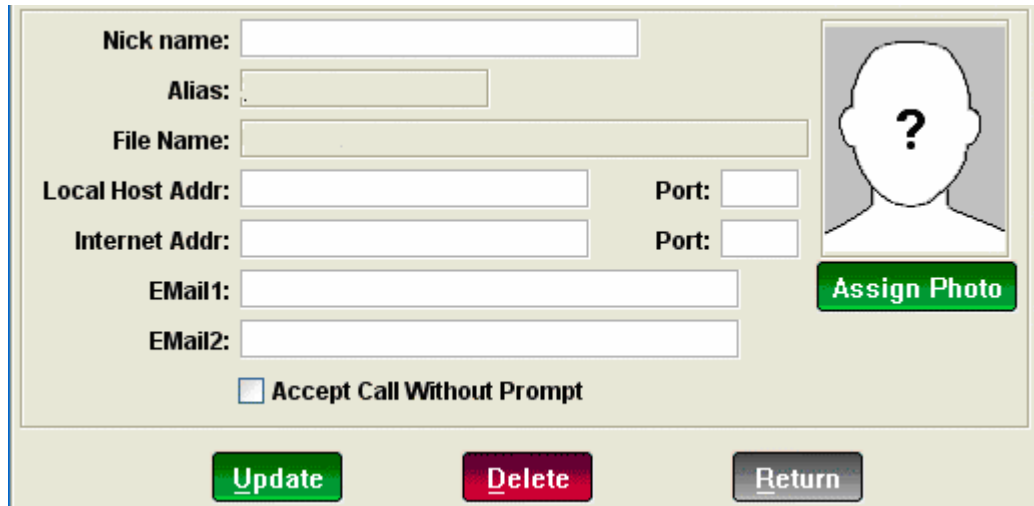
A screenshot of a web-based contact record form. The form has a light beige background and a blue border. It contains several input fields: 'Nick name:', 'Alias:', 'File Name:', 'Local Host Addr:', 'Internet Addr:', 'Email1:', and 'Email2:'. There are also 'Port:' fields next to the 'Local Host Addr:' and 'Internet Addr:' fields. A checkbox labeled 'Accept Call Without Prompt' is located below the email fields. On the right side of the form, there is a placeholder image of a person's head with a question mark inside. Below this placeholder is a green button labeled 'Assign Photo'. At the bottom of the form, there are three buttons: 'Update' (green), 'Delete' (red), and 'Return' (grey).

Figure 3.11. Assign Photo Button Enabled

After depressing the Assign Photo button, a browser window appears allowing you to choose the image file.

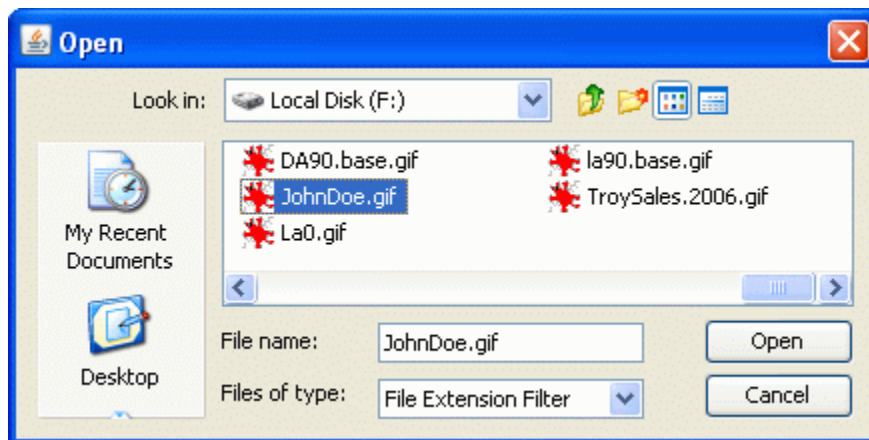


Figure 3.12. Assign Photo Button Enabled

Important note! In order to save the image assignment, you *must* hit the update button and save the contact record changes.