

## Secure Financial Information Manager

### Secure and Mobile Contact Information



Compact enough to fit on a **USB drive** and carry in your pocket.

DocuArmorFinMgr allows the user to encrypt and decrypt files by plugging in to any PC. It also runs on laptops, desktops, or any server.

For a very low cost carry your financial data with confidence and prevent unwanted eyes from stealing your information. [Learn more...](#)

### Highest Encryption and Performance

DocuArmorFinMgr uses the highest encryption standard allowable in the United States. DocuArmorFinMgr uses AES 256-bit encryption to protect your confidential information.

No need to unnecessarily encrypt entire disks or volumes of data.

### Password Protection

The file of financial information records is electronically encrypted and the keys used in ciphering are password protected.

### Asset and Debt Tracking

DocuArmorFinMgr users can add, update, and delete asset and debt records. Calculate your total assets verses debts and determine your financial net worth. Use the amortization calculator to analyze potential loans. [Learn more...](#)

### Adding Images



Associating an image with an asset record is a snap. Just drag and drop a jpg or gif to an existing asset such as a house, jewelry or rare painting.

DocuArmorFinMgr will copy and display the image along with the asset information. [Learn more...](#)

### Budget and Expense Tracking

DocuArmorFinMgr provides a budget and expense tracking module which allows users to determine monthly income, where their money is being spent and analyze its distribution. Tweak your budget,

allowing you to live within your means. [Learn more...](#)

### Investment Research

DocuArmorFinMgr allows users to create watch lists of stocks and funds and will dynamically retrieve information if you have high-speed internet access. Use the information to build your retirement portfolio. [Learn more...](#)

### Prevention and Safeguards

- Unauthorized viewing of your encrypted financial information is prevented.
- Protect personal information to fulfill government regulations such as HIPAA.
- Strengthen your security against information thieves and pirates. Protection yourself from Identity Theft

### Competition and Pricing

DocuArmorFinMgr is competitively priced for the single user edition. There are few if any competitors for this product, no one offers this much rich function for an economical price. Most competitors offer difficult and expensive solutions which can include annual subscriptions and no protection.

### Contact

Logical Answers Inc. also offers custom programming and support services to tailor products to your needs.

**A single user license sells for only \$10.00.** For further information about this suite of products or for volume pricing please contact:



[support@logicalanswers.com](mailto:support@logicalanswers.com)

Logical Answers Inc.

Troy, MI 48085

(248) 528-1742

web: <http://www.logicalanswers.com>

# DocuArmorFinMgr Overview



**DocuArmor Finance Manager** (DocuArmorFinMgr) is a *secure* software application that provides management of an individual's financial information. All information is stored in a secure encrypted file to prevent any thieves from reading any records they might steal. DocuArmorFinMgr will encrypt and decrypt the file dynamically.

In today's environment, information security is crucial for everyone. Security needs vary widely from protecting social security numbers to guarding intellectual property.

DocuArmorFinMgr ...

1. Allows individuals to carry their financial information on a laptop or portable device such as a USB drive and is protected by an encrypted file.
2. Collects and calculates total of all assets owned by an individual such as real-estate, stocks, mutual funds, valuables, etc. If owner has high-speed internet access, will dynamically update investment assets providing user with real-time asset totals.
3. Collects and calculates total of all debts owned by an individual such as credit cards, loans, mortgages, etc.
4. Provides budget management and analysis. Determine how your money is being spent and where it's allocated. Track your actual expenses and compare it to budget projections. Use expense comparisons to modify your budget allocation
5. Research potential investment stocks or funds and track their history. Keep them on a watch list and analyze their performance graphs.
6. With high-speed internet access, retrieve financial information on stocks and funds while avoiding annoying ads and irrelevant information.
7. Provides import of records in comma separated values (CSV) format from your accounts at financial institutions.

DocuArmorFinMgr is architected to take advantage of the USB (Universal Serial Bus) Flash Drives that are perfect for mobile professionals. Compact enough to fit on a USB drive, carry it in your pocket and run the application directly by plugging it in to a PC. (Works with any drive sized with at least 128 mb). Using the application from a USB drive allows the user to protect their contact information on a laptop, personal computer, or networked drive with confidence knowing that nobody can read them without their password protected keys.

The designed portability of DocuArmorFinMgr allows the user to run the application on *any* laptop or PC that has a USB port *without installing* the application on that PC. If anyone finds a lost or stolen USB drive with DocuArmorFinMgr, the secured financial information remains undecipherable.

# DocuArmorFinMgr Assets and Debts

DocuArmorFinMgr users can add, update, and delete asset and debt records. To use these features, select the notebook page **Assets** or **Debts**.

DocuArmor Finance Manager for: John Q Public

File Preferences Export Certificates Help

Filter: All ☐ Exclude Closed **Assets** Total: \$128,477.13 Count: 6

| Type        | Name                   | Symbol | Acquired   | Acct/Pol# | Current Value |
|-------------|------------------------|--------|------------|-----------|---------------|
| CD/Bond     | Series EE Savings Bond |        | 04/11/2010 | 123P00R   | \$500.00      |
| Checking    | Bank of America        |        | 07/15/2000 | 12234     | \$250.00      |
| Mutual Fund | Fidelity Contrafund    | FCNTX  | 02/15/2008 | 991222    | \$15,340.00   |
| Real Estate | 39491 Leecharlow       |        | 04/19/2006 |           | \$108,200.00  |
| Savings     | Bank of America        |        | 07/15/2000 | 12235     | \$525.63      |

Identification: Assets, Debts, Budget, Research

Type: Stock ☐ Tax Deferred

Name:

Acct#:

Symbol:  Curr Qty:

Price:  \$ Curr Value:  \$

Acquired:  Closed:

Est. Net Gain/Loss:  \$

Notes:

☐ Mute Sounds **Add** **Delete** **Clear** **Exit**

(c) 2010 Logical Answers Inc. All rights reserved.

Secure

*Figure. Asset Maintenance Page*

The Asset page provides for adding investments like stocks or mutual funds or accounts from financial institutions such as checking, savings and CDs.

The Debt page provides for adding credit cards, loans and mortgages.

DocuArmor Finance Manager for: John Q Public

File Preferences Export Certificates Help

Filter: All

### Debts

Tot Debts: \$138,106.12 Count: 4

| Type        | Name             | Acquired   | Closed | Current Value | Cost            |
|-------------|------------------|------------|--------|---------------|-----------------|
| Credit Card | American Express | 10/02/2009 |        | \$1,234.56    | ***             |
| Credit Card | VISA             | 08/13/2010 |        | \$123.00      | ***             |
| Loan        | GMAC             | 12/13/2008 |        | \$10,428.56   | \$12,456.91 12  |
| Mortgage    | CitiMortgage     | 02/05/2005 |        | \$126,320.00  | \$129,500.00 PO |


Type: Credit Card Acct#:

Name:

Cost: \$ Balance: \$

Acquired:  Closed:

Notes:



☐ Mute Sounds

(c) 2010 Logical Answers Inc. All rights reserved.

Secure

Identification


Assets

Debts


Budget

Research

Figure. Debt Maintenance Page

You can also calculate the amortization schedule for a loan by hitting the toolbar icon, .

Amortization Calculator

Export 

Amortization Calculator

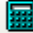
Input Values

Loan Amt: \$100,000.00

\*Payment: \$521.65

Interest: 4.7500%

Number of Months: 360

Calc 

Summary Totals

Total Payments: \$187,791.88

Total Interest: \$87,791.88

| Per | Payment  | Principal | Interest | Balance    |
|-----|----------|-----------|----------|------------|
| 1   | \$521.65 | \$125.82  | \$395.83 | \$99,874.1 |
| 2   | \$521.65 | \$126.31  | \$395.34 | \$99,747.8 |
| 3   | \$521.65 | \$126.81  | \$394.84 | \$99,621.0 |
| 4   | \$521.65 | \$127.32  | \$394.33 | \$99,493.7 |
| 5   | \$521.65 | \$127.82  | \$393.83 | \$99,365.9 |
| 6   | \$521.65 | \$128.33  | \$393.32 | \$99,237.5 |
| 7   | \$521.65 | \$128.83  | \$392.82 | \$99,108.7 |
| 8   | \$521.65 | \$129.34  | \$392.31 | \$98,979.4 |
| 9   | \$521.65 | \$129.86  | \$391.79 | \$98,849.5 |
| 10  | \$521.65 | \$130.37  | \$391.28 | \$98,719.1 |
| 11  | \$521.65 | \$130.89  | \$390.76 | \$98,588.3 |
| 12  | \$521.65 | \$131.40  | \$390.25 | \$98,456.8 |
| 13  | \$521.65 | \$131.92  | \$389.73 | \$98,324.9 |
| 14  | \$521.65 | \$132.45  | \$389.20 | \$98,192.5 |
| 15  | \$521.65 | \$132.97  | \$388.68 | \$98,059.5 |
| 16  | \$521.65 | \$133.50  | \$388.15 | \$97,926.0 |

Clear

Return

Figure. Amortization Calculator

# Adding a Photo to an Asset

Photo images can be integrated with each *existing* asset record. Ideally, the image should be in **gif** or **jpg** format. If the image is larger or smaller than the allocated space, it will be resized within the image frame but might appear distorted.

After an asset record is saved, the initial image is a blank. The **Add** button is enabled allowing the selection of an existing image to be associated to the asset record. Alternately, one can drag and drop an image file on the image area.

**DocuArmor Finance Manager for: John Q Public**

File Preferences Export Certificates Help

Filter: All ☐ Exclude Closed **Assets** Total: \$128,477.13 Count: 6

| Type        | \$ | Name                   | Symbol | Acquired   | Acct/Pol# | Current Value |
|-------------|----|------------------------|--------|------------|-----------|---------------|
| CD/Bond     |    | Series EE Savings Bond |        | 04/11/2010 | 123P00R   | \$500.00      |
| Checking    |    | Bank of America        |        | 07/15/2000 | 12234     | \$250.00      |
| Mutual Fund |    | Fidelity Contrafund    | FCNTX  | 02/15/2008 | 991222    | \$15,340.00   |
| Real Estate |    | 39491 Leecharlow       |        | 04/19/2006 |           | \$108,200.00  |
| Savings     |    | Bank of America        |        | 07/15/2000 | 12235     | \$525.63      |

Type: Real Estate ☐ Tax Deferred

Name: 39491 Leecharlow

Acct#:

Cost: \$129,000.00 Curr Value: \$108,200.00

Acquired: 04/19/2006 Closed: / /

Est. Net Gain/Loss: \$-20,800.00

Notes: Home

1 of 1

View Add Del

☐ Mute Sounds **Update** **Delete** **Clear** **Exit**

(c) 2010 Logical Answers Inc. All rights reserved.

Image(s) copied successfully!

Secure

Figure. Adding Photo to Asset

# Budget and Expense Tracking

The budget page allows the user to record where your income is accruing and how your money is being spent. You can use predefined categories and add your own. The objective is to develop a view of your monthly income and expenses and let it assist in your day-to-day living.

**DocuArmor Finance Manager for: John Q Public**

File Preferences Export Certificates Help

**Budget** 2012 Count: 7

| Inc/Exp | Type         | Cat             | Name                  | Amount     | Due        | M   |
|---------|--------------|-----------------|-----------------------|------------|------------|-----|
| I       | Monthly      |                 | Xfer from Savings     | \$1,000.00 | 04/01/2012 | \$1 |
| E       | Monthly      | Auto/Transport  | Gas                   | \$15.00    | 04/15/2012 | \$  |
| E       | Monthly      | Household       | Netflix               | \$11.00    | 04/01/2012 | \$  |
| E       | Semiannually | Taxes/Insurance | Auto Insurance        | \$400.00   | 04/01/2012 | \$  |
| E       | Annually     | Taxes/Insurance | House Insurance       | \$600.00   | 04/08/2012 | \$  |
| E       | Monthly      | Utilities       | Heat/Natural Gas Bill | \$99.00    | 04/09/2012 | \$  |

☐ Income ☒ Expense Monthly

Name:

Amount:  \$

Monthly:  \$ % Accrual:  \$

Due:  Last Paid:

Cat: General

Notes:

**Monthly Expense Analysis**

Income(Mar): \$1,000.00  
Expense(Mar): \$256.67  
Net(Mar): \$743.33

| Category        | Total    | Percent |
|-----------------|----------|---------|
| Auto/Transport  | \$15.00  | 5.84%   |
| Household       | \$11.00  | 4.29%   |
| Taxes/Insurance | \$116.67 | 45.45%  |
| Utilities       | \$114.00 | 44.42%  |

**Expense Tracking**

☐ Mute Sounds

(c) 2010 Logical Answers Inc. All rights reserved.

Secure

Figure. Budget Page



Once you've added your budget items, you can hit the analysis button to review your monthly and annual income vs. expenses.

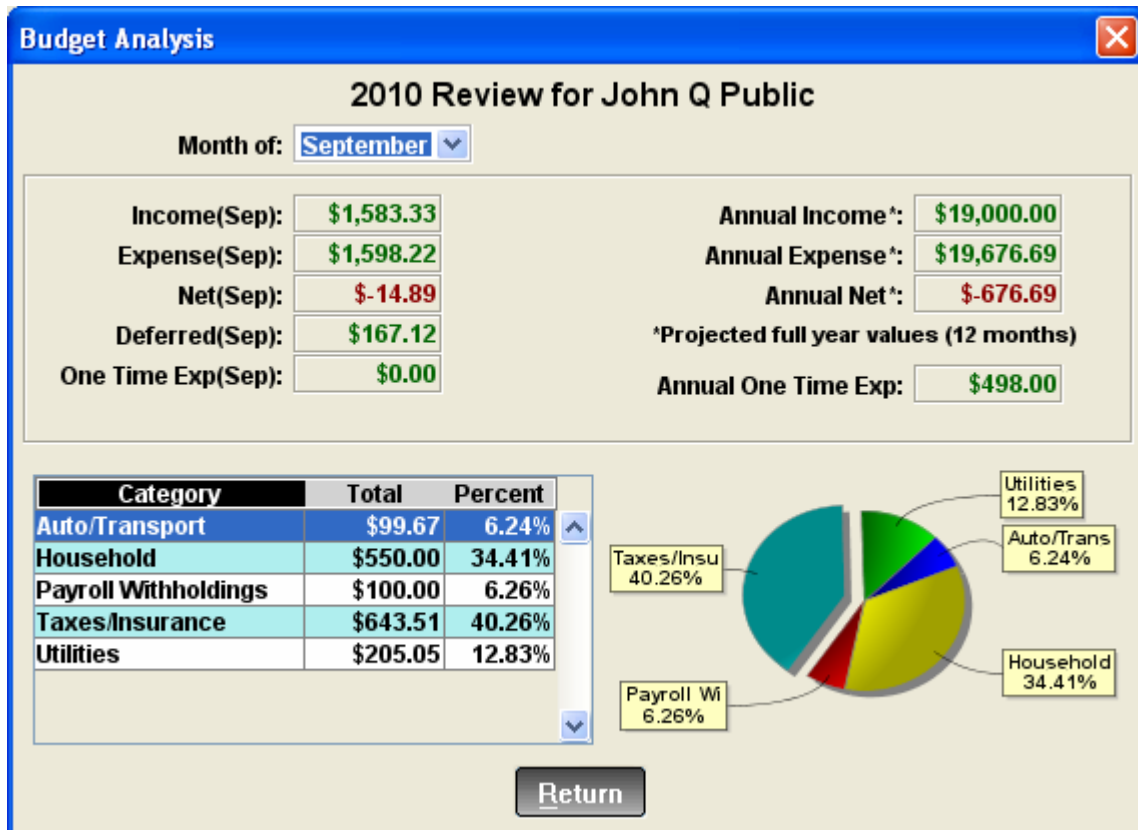


Figure. Budget Analysis

You can also track your actual expenses by hitting the expense button and compare it to your budget projections.

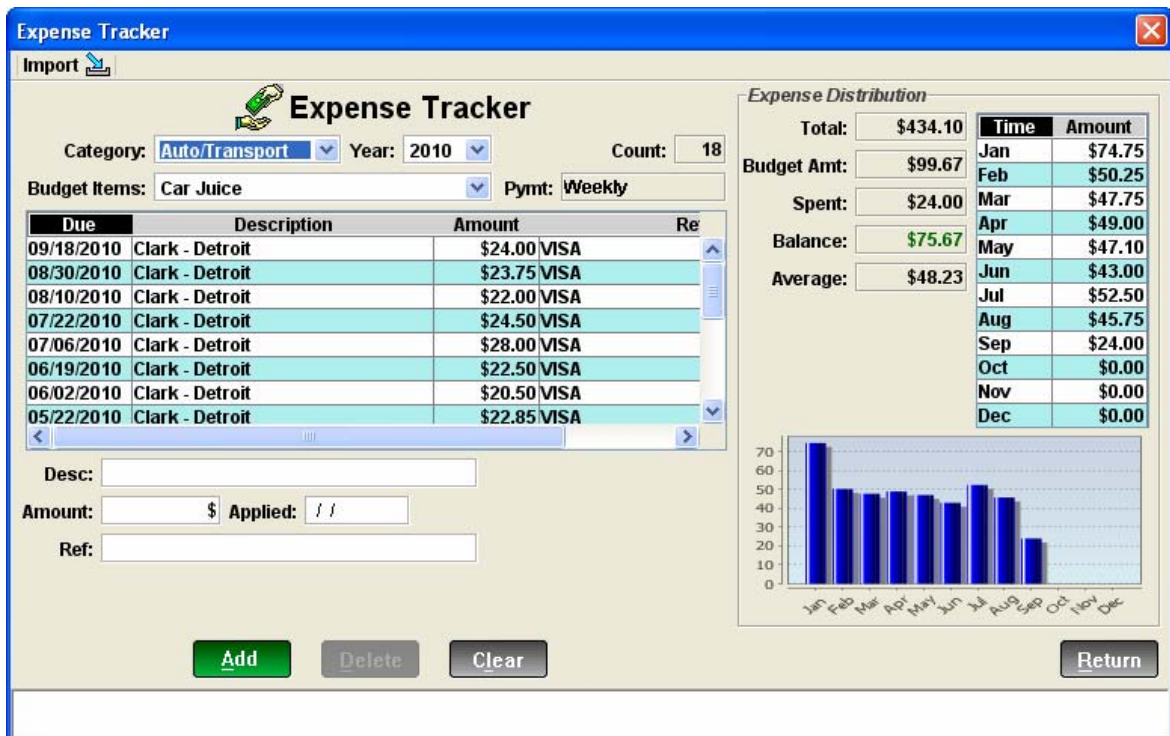


Figure. Expense Tracking



# Investment Research

DocuArmorFinMgr allows users to create watch lists of stocks and funds and will dynamically retrieve information if you have high-speed internet access. Once the information is retrieved, you can review a funds holdings, view performance charts, and review history of quotes. The information can be used to build your retirement portfolio.

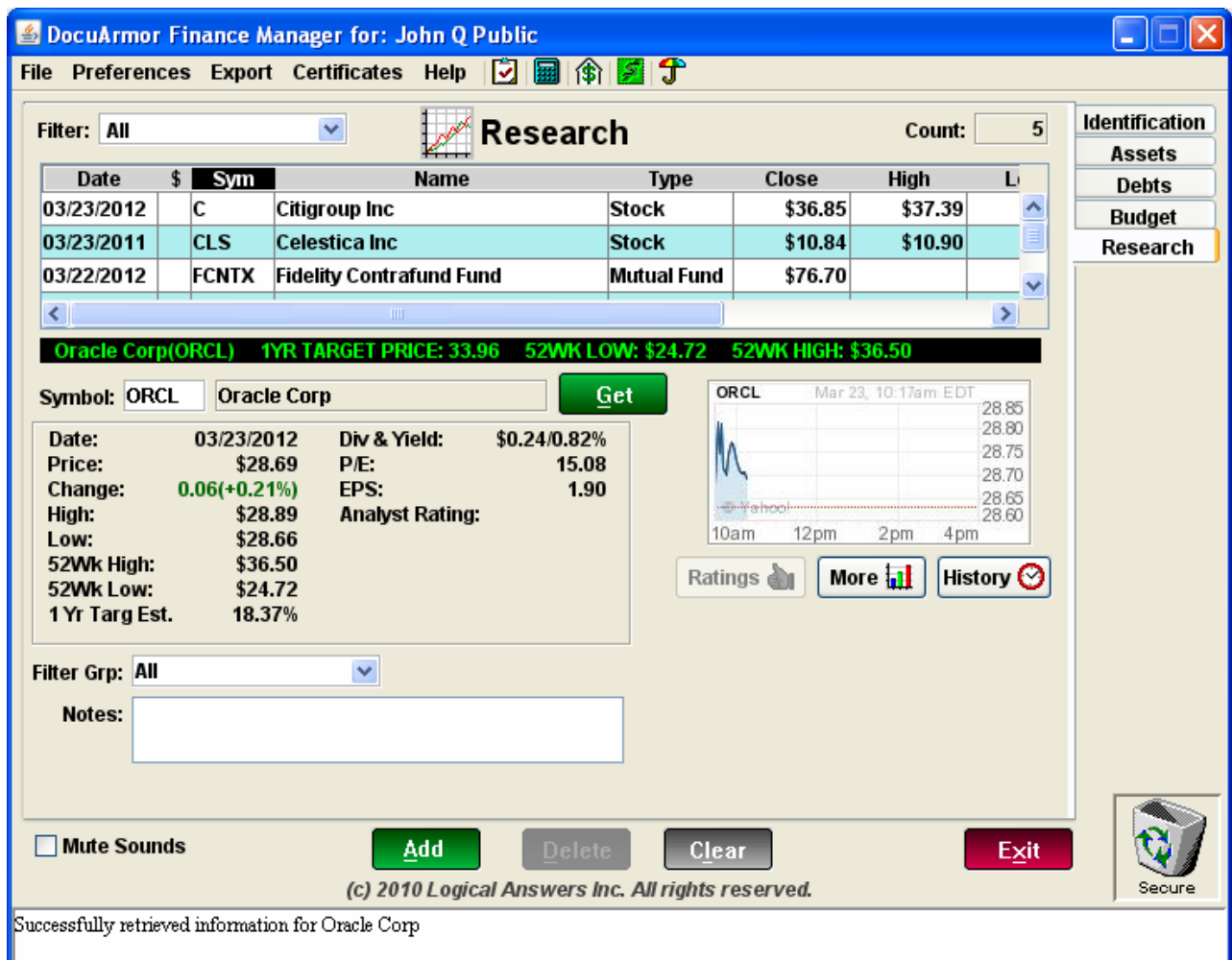


Figure. Investment Research